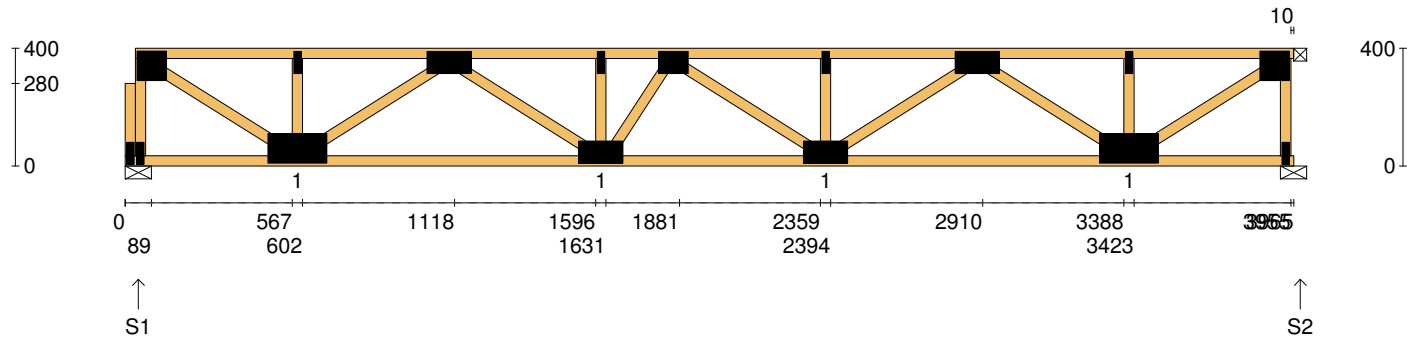


Client: D'ANDREA	Trusstech SA Pty Ltd 16 High St., Dry Creek, SA 5094	Job No: TT02364
Site: 50-52 WINDOR ST MAGILL SA 5072 AUS		Weight: 24.96 kg
Ref: DWLG 5	Joist Name: FJ1 Type: SJ 400 Joists: FJ1, FJ23	Total Weight: 49.92 kg
		Laminations: 1



TIMBER / PLATES


Member	Size	Plating	Restraint
BC1	90x35-MGP10 H0 ADS	JD5	600
LBlock1	90x35-MGP10 H0 ADS	JD5	
LEW1	90x35-MGP10 H0 ADS	JD5	
TC1	90x35-MGP10 H0 ADS	JD5	300
W1	90x35-MGP10 H0 ADS	JD5	
W2	90x35-MGP10 H0 ADS	JD5	
W3	90x35-MGP10 H0 ADS	JD5	
W4	90x35-MGP10 H0 ADS	JD5	
W5	90x35-MGP10 H0 ADS	JD5	
W6	90x35-MGP10 H0 ADS	JD5	
W7	90x35-MGP10 H0 ADS	JD5	
W8	90x35-MGP10 H0 ADS	JD5	
W9	90x35-MGP10 H0 ADS	JD5	

- 4 more members were not shown -

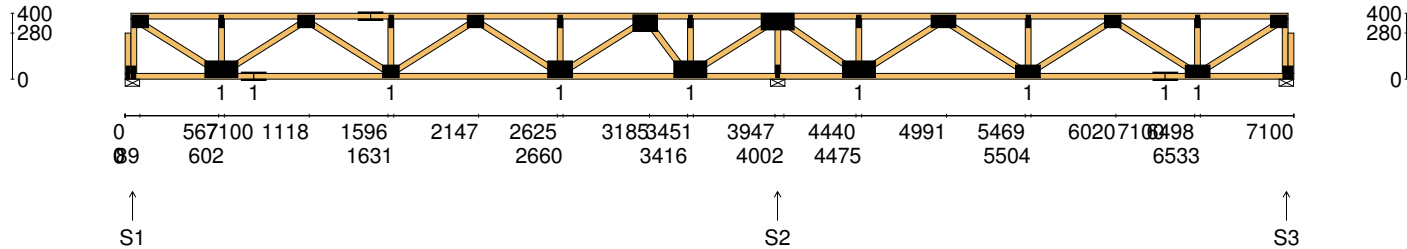
Vertical Reactions at Supports

	S1	S2
1.35DL (kN)	0.65	0.65
1.2DL + 1.5LL (kN)	3.20	3.20

Joint	Nail Plate	Joint	Nail Plate
BL1-1	25x75-MN	T8	25x75-MN
T1	100x100-MN	BR1	25x75-MN
BL1	25x75-MN	T9	100x100-MN
B1	100x200-MN		
T2	25x75-MN		
T3	75x150-MN		
B2	75x150-MN		
T4	25x75-MN		
T5	75x100-MN		
B3	75x150-MN		
T6	25x75-MN		
T7	75x150-MN		
B4	100x200-MN		

Span: 3965	Floor Material: Particle (15.4 kg/m²)	Application: General Areas	All dimensions in millimetres. This drawing should be read in conjunction with Multinail Technical sheets. Wall plates must be placed at supports only.	016020 (TN-016-020)
Overhang: 0/0	Floor Covering: Std Carpet + Underlay (8 kg/m²)	Live Load: 1.5 kPa		Ver: Floor 1.9.4
Spacing: 600	Ceiling Material: Plaster 10mm Supa Span (8.2 kg/m²)	Point Load: 1.8 kN		Date: 14/02/2019
Quantity: 2	Ceiling Fixing: Metal direct @ 600c	Design: AS 1720.1-2010		Page: 1 of 23

Client: D'ANDREA	Trusstech SA Pty Ltd 16 High St., Dry Creek, SA 5094	Job No: TT02364
Site: 50-52 WINDOR ST MAGILL SA 5072 AUS		Weight: 44.68 kg
Ref: DWLG 5	Joist Name: FJ2 Type: SJ 400	Total Weight: 178.70 kg
	Joists: FJ2, FJ3, FJ4, FJ5	Laminations: 1



TIMBER / PLATES

Member	Size	Plating	Restraint
BC1	90x35-MGP10 H0 ADS	JD5	600
LBlock1	90x35-MGP10 H0 ADS	JD5	
LEW1	90x35-MGP10 H0 ADS	JD5	
TC1	90x35-MGP10 H0 ADS	JD5	300
W1	90x35-MGP10 H0 ADS	JD5	
W2	90x35-MGP10 H0 ADS	JD5	
W3	90x35-MGP10 H0 ADS	JD5	
BC2	90x35-MGP10 H0 ADS	JD5	600
W4	90x35-MGP10 H0 ADS	JD5	
TC2	90x35-MGP10 H0 ADS	JD5	300
W5	90x35-MGP10 H0 ADS	JD5	
W6	90x35-MGP10 H0 ADS	JD5	
W7	90x35-MGP10 H0 ADS	JD5	


- 18 more members were not shown -

Vertical Reactions at Supports

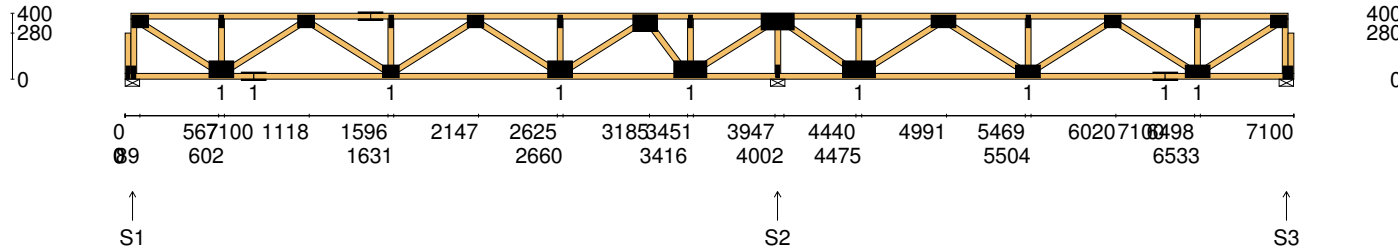
	S1	S2	S3
1.35DL (kN)	0.53	1.44	0.36
1.2DL + 1.5LL (kN)	2.60	7.16	1.75

Joint	Nail Plate	Joint	Nail Plate
BL1-1	25x75-MN	T8	100x150-MN
T1	75x100-MN	B5	100x200-MN
BL1	25x75-MN	T9	25x75-MN
B1	100x200-MN	T10	100x200-MN
T2	25x75-MN	B6	25x75-MN
B2	75x150-MN	B7	100x200-MN
T3	75x100-MN	T11	25x75-MN
T4	75x150-MN	T12	75x150-MN
B3	75x100-MN	B8	75x150-MN
T5	25x75-MN	T13	25x75-MN
T6	75x100-MN	T14	75x100-MN
B4	100x150-MN	B9	75x150-MN
T7	25x75-MN	BR1-1	25x75-MN

- 4 more nail plates were not shown -

Span: 7100	Floor Material: Particle (15.4 kg/m²)	Application: General Areas	All dimensions in millimetres. This drawing should be read in conjunction with Multinail Technical sheets. Wall plates must be placed at supports only.	016020 (TN-016-020)
Overhang: 0/0	Floor Covering: Std Carpet + Underlay (8 kg/m²)	Live Load: 1.5 kPa		Ver: Floor 1.9.4
Spacing: 600	Ceiling Material: Plaster 10mm Supa Span (8.2 kg/m²)	Point Load: 1.8 kN		Date: 14/02/2019
Quantity: 4	Ceiling Fixing: Metal direct @ 600c	Design: AS 1720.1-2010		Page: 2 of 23

Client: D'ANDREA	Trusstech SA Pty Ltd 16 High St., Dry Creek, SA 5094	Job No: TT02364
Site: 50-52 WINDOR ST MAGILL SA 5072 AUS		Weight: 44.60 kg
Ref: DWLG 5	Joist Name: FJ3 Type: SJ 400 Joists: FJ6	Total Weight: 44.60 kg
		Laminations: 1



TIMBER / PLATES

Member	Size	Plating	Restraint
BC1	90x35-MGP10 H0 ADS	JD5	600
LBlock1	90x35-MGP10 H0 ADS	JD5	
LEW1	90x35-MGP10 H0 ADS	JD5	
TC1	90x35-MGP10 H0 ADS	JD5	300
W1	90x35-MGP10 H0 ADS	JD5	
W2	90x35-MGP10 H0 ADS	JD5	
W3	90x35-MGP10 H0 ADS	JD5	
BC2	90x35-MGP10 H0 ADS	JD5	600
W4	90x35-MGP10 H0 ADS	JD5	
TC2	90x35-MGP10 H0 ADS	JD5	300
W5	90x35-MGP10 H0 ADS	JD5	
W6	90x35-MGP10 H0 ADS	JD5	
W7	90x35-MGP10 H0 ADS	JD5	


- 18 more members were not shown -

Vertical Reactions at Supports

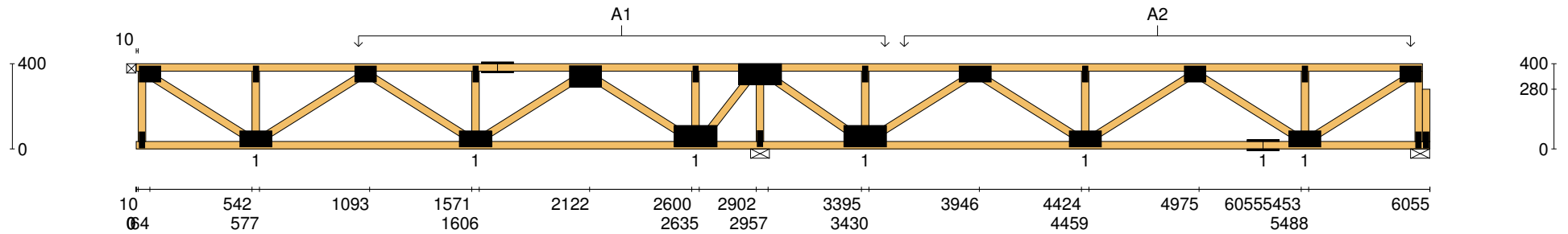
	S1	S2	S3
1.35DL (kN)	0.50	1.71	0.66
1.2DL + 1.5LL (kN)	2.58	7.40	2.02

Joint	Nail Plate	Joint	Nail Plate
BL1-1	25x75-MN	T8	100x150-MN
T1	75x100-MN	B5	100x200-MN
BL1	25x75-MN	T9	25x75-MN
B1	100x150-MN	T10	100x200-MN
T2	25x75-MN	B6	25x75-MN
B2	75x150-MN	B7	100x200-MN
T3	75x100-MN	T11	25x75-MN
T4	75x150-MN	T12	75x150-MN
B3	75x100-MN	B8	75x150-MN
T5	25x75-MN	T13	25x75-MN
T6	75x100-MN	T14	75x100-MN
B4	100x150-MN	B9	75x150-MN
T7	25x75-MN	BR1-1	25x75-MN

- 4 more nail plates were not shown -


Span: 7100	Floor Material: Particle (15.4 kg/m²)	Application: General Areas	All dimensions in millimetres. This drawing should be read in conjunction with Multinail Technical sheets. Wall plates must be placed at supports only.	016020 (TN-016-020)
Overhang: 0/0	Floor Covering: Std Carpet + Underlay (8 kg/m²)	Live Load: 1.5 kPa		Ver: Floor 1.9.4
Spacing: 600	Ceiling Material: Plaster 10mm Supa Span (8.2 kg/m²)	Point Load: 1.8 kN		Date: 14/02/2019
Quantity: 1	Ceiling Fixing: Metal direct @ 600c	Design: AS 1720.1-2010		Page: 3 of 23

Client: D'ANDREA	Trusstech SA Pty Ltd 16 High St., Dry Creek, SA 5094	Job No: TT02364
Site: 50-52 WINDOR ST MAGILL SA 5072 AUS		Weight: 38.01 kg
Ref: DWLG 5	Joist Name: FJ4 Type: SJ 400 Joists: FJ7, FJ8	Total Weight: 76.02 kg
		Laminations: 1

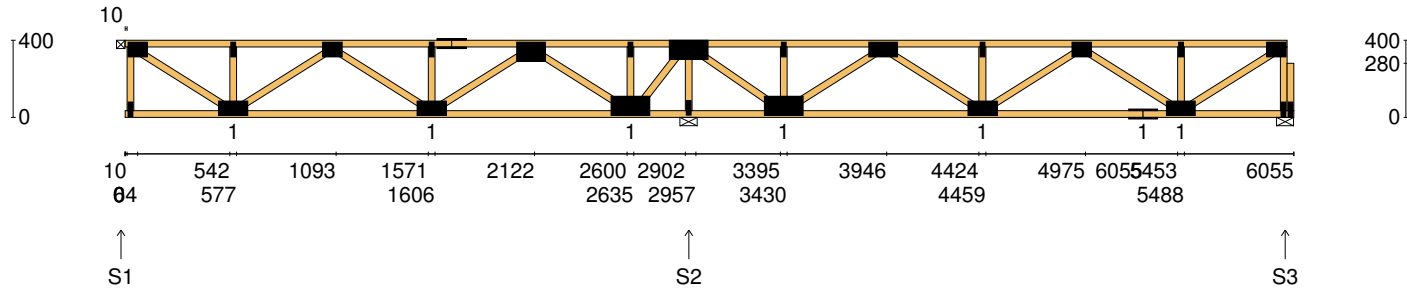


User Def. Load	A1	A2
	189.10 kg/m ²	53.00 kg/m ²
	WET AREA	WET AREA

Applied Load	
DL	(kN)
LL	(kN)
WL Up	(kN)
WL Dn	(kN)

Span:	6055	Floor Material:	Particle (15.4 kg/m ²)	Application:	General Areas	All dimensions in millimetres. This drawing should be read in conjunction with Multinail Technical sheets. Wall plates must be placed at supports only.	016020 (TN-016-020)
Overhang:	0/0	Floor Covering:	Std Carpet + Underlay (8 kg/m ²)	Live Load:	1.5 kPa		Ver: Floor 1.9.4
Spacing:	600	Ceiling Material:	Plaster 10mm Supa Span (8.2 kg/m ²)	Point Load:	1.8 kN		Date: 14/02/2019
Quantity:	2	Ceiling Fixing:	Metal direct @ 600c	Design:	AS 1720.1-2010		Page: 6 of 23

Client: D'ANDREA	Trusstech SA Pty Ltd 16 High St., Dry Creek, SA 5094	Job No: TT02364
Site: 50-52 WINDOR ST MAGILL SA 5072 AUS		Weight: 38.01 kg
Ref: DWLG 5	Joist Name: FJ4 Type: SJ 400 Joists: FJ9, FJ10	Total Weight: 76.02 kg
		Laminations: 1



TIMBER / PLATES


Member	Size	Plating	Restraint
BC1	90x35-MGP10 H0 ADS	JD5	600
TC1	90x35-MGP10 H0 ADS	JD5	300
LEW1	90x35-MGP10 H0 ADS	JD5	
W1	90x35-MGP10 H0 ADS	JD5	
W2	90x35-MGP10 H0 ADS	JD5	
W3	90x35-MGP10 H0 ADS	JD5	
W4	90x35-MGP10 H0 ADS	JD5	
W5	90x35-MGP10 H0 ADS	JD5	
W6	90x35-MGP10 H0 ADS	JD5	
TC2	90x35-MGP10 H0 ADS	JD5	300
W7	90x35-MGP10 H0 ADS	JD5	
W8	90x35-MGP10 H0 ADS	JD5	
W9	90x35-MGP10 H0 ADS	JD5	

- 13 more members were not shown -

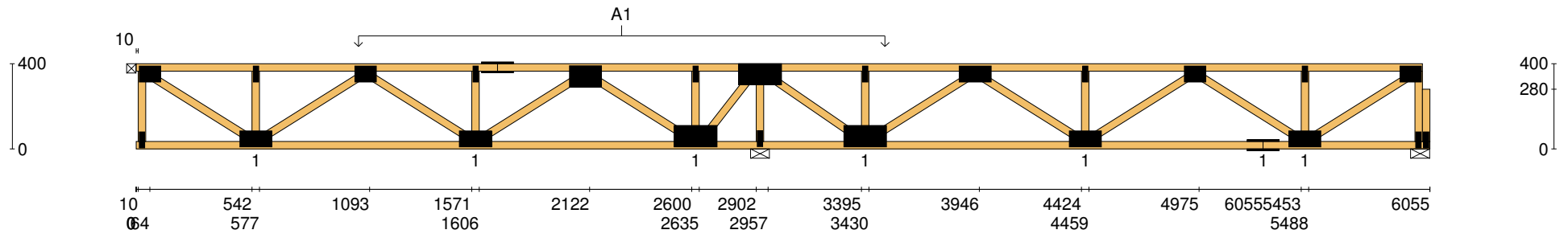
Vertical Reactions at Supports


	S1	S2	S3
1.35DL (kN)	0.54	2.00	0.38
1.2DL + 1.5LL (kN)	2.11	7.39	1.95

Joint	Nail Plate	Joint	Nail Plate
T1	75x100-MN	B5	100x200-MN
BL1	25x75-MN	T9	25x75-MN
B1	75x150-MN	T10	75x150-MN
T2	25x75-MN	B6	75x150-MN
T3	75x100-MN	T11	25x75-MN
B2	75x150-MN	T12	75x100-MN
T4	25x75-MN	B7	75x150-MN
T5	75x150-MN	B8	75x150-MN
T6	100x150-MN	T13	25x75-MN
B3	100x200-MN	BR1	25x75-MN
T7	25x75-MN	T14	75x100-MN
T8	100x200-MN	BR1-1	25x75-MN
B4	25x75-MN		

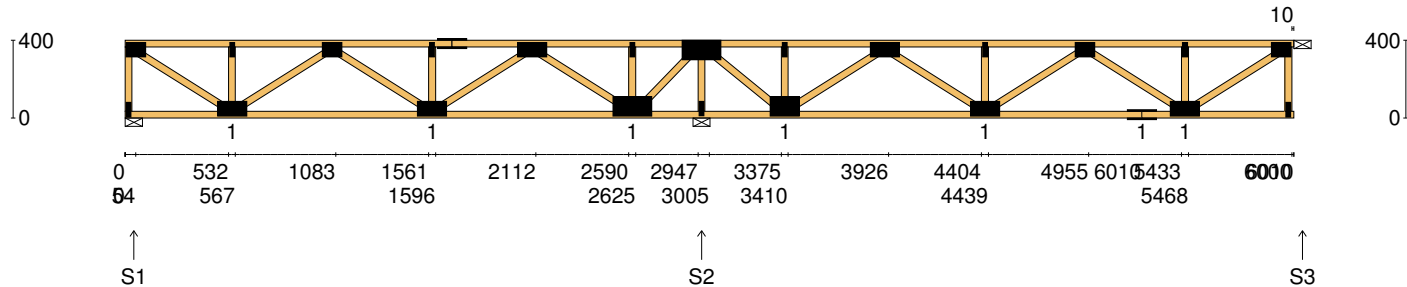
Span: 6055	Floor Material: Particle (15.4 kg/m²)	Application: General Areas	All dimensions in millimetres. This drawing should be read in conjunction with Multinail Technical sheets. Wall plates must be placed at supports only.	016020 (TN-016-020)
Overhang: 0/0	Floor Covering: Std Carpet + Underlay (8 kg/m²)	Live Load: 1.5 kPa		Ver: Floor 1.9.4
Spacing: 600	Ceiling Material: Plaster 10mm Supa Span (8.2 kg/m²)	Point Load: 1.8 kN		Date: 14/02/2019
Quantity: 2	Ceiling Fixing: Metal direct @ 600c	Design: AS 1720.1-2010		Page: 7 of 23

Client: D'ANDREA	Trusstech SA Pty Ltd 16 High St., Dry Creek, SA 5094	Job No: TT02364
Site: 50-52 WINDOR ST MAGILL SA 5072 AUS		Weight: 38.01 kg
Ref: DWLG 5	Joist Name: FJ4 Type: SJ 400 Joists: FJ9, FJ10	Total Weight: 76.02 kg
		Laminations: 1



User Def. Load		A1 189.10 kg/m ² WET AREA	
Applied Load			
DL	(kN)		
LL	(kN)		
WL Up	(kN)		
WL Dn	(kN)		
Span:	6055	Floor Material:	Particle (15.4 kg/m²)
Overhang:	0/0	Floor Covering:	Std Carpet + Underlay (8 kg/m²)
Spacing:	600	Ceiling Material:	Plaster 10mm Supa Span (8.2 kg/m²)
Quantity:	2	Ceiling Fixing:	Metal direct @ 600c
		Application:	General Areas
		Live Load:	1.5 kPa
		Point Load:	1.8 kN
		Design:	AS 1720.1-2010
		All dimensions in millimetres. This drawing should be read in conjunction with Multinail Technical sheets. Wall plates must be placed at supports only.	
			
		016020 (TN-016-020)	
		Ver:	Floor 1.9.4
		Date:	14/02/2019
		Page:	8 of 23

Client: D'ANDREA	Trusstech SA Pty Ltd 16 High St., Dry Creek, SA 5094	Job No: TT02364
Site: 50-52 WINDOR ST MAGILL SA 5072 AUS		Weight: 37.34 kg
Ref: DWLG 5	Joist Name: FJ5 Type: SJ 400 Joists: FJ11	Total Weight: 37.34 kg
		Laminations: 1



TIMBER / PLATES


Member	Size	Plating	Restraint
BC1	90x35-MGP10 H0 ADS	JD5	600
LEW1	90x35-MGP10 H0 ADS	JD5	
TC1	90x35-MGP10 H0 ADS	JD5	300
W1	90x35-MGP10 H0 ADS	JD5	
W2	90x35-MGP10 H0 ADS	JD5	
W3	90x35-MGP10 H0 ADS	JD5	
W4	90x35-MGP10 H0 ADS	JD5	
W5	90x35-MGP10 H0 ADS	JD5	
W6	90x35-MGP10 H0 ADS	JD5	
TC2	90x35-MGP10 H0 ADS	JD5	300
W7	90x35-MGP10 H0 ADS	JD5	
W8	90x35-MGP10 H0 ADS	JD5	
W9	90x35-MGP10 H0 ADS	JD5	

- 12 more members were not shown -

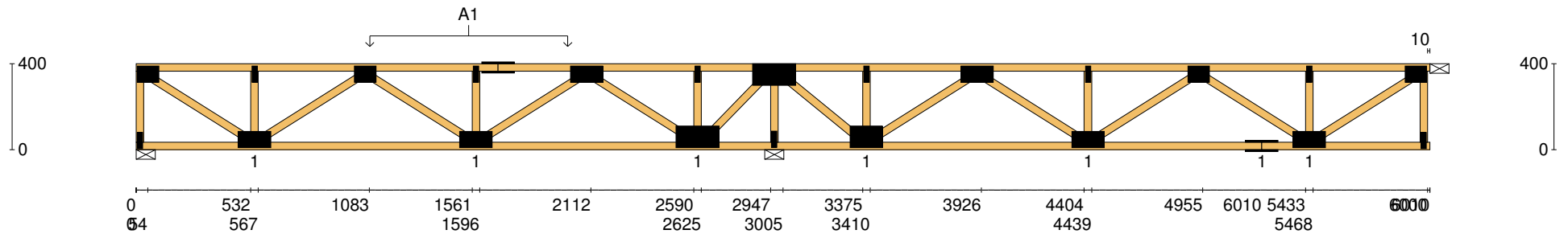
Vertical Reactions at Supports

	S1	S2	S3
1.35DL (kN)	0.52	1.45	0.36
1.2DL + 1.5LL (kN)	2.10	6.43	1.88

Joint	Nail Plate	Joint	Nail Plate
T1	75x100-MN	B5	100x150-MN
BL1	25x75-MN	T9	25x75-MN
B1	75x150-MN	T10	75x150-MN
T2	25x75-MN	B6	75x150-MN
T3	75x100-MN	T11	25x75-MN
B2	75x150-MN	T12	75x100-MN
T4	25x75-MN	B7	75x150-MN
T5	75x150-MN	B8	75x150-MN
T6	75x150-MN	T13	25x75-MN
B3	100x200-MN	BR1	25x75-MN
T7	25x75-MN	T14	75x100-MN
T8	100x200-MN		
B4	25x75-MN		


Span: 6010	Floor Material: Particle (15.4 kg/m²)	Application: General Areas	All dimensions in millimetres. This drawing should be read in conjunction with Multinail Technical sheets. Wall plates must be placed at supports only.	016020 (TN-016-020)
Overhang: 0/0	Floor Covering: Std Carpet + Underlay (8 kg/m²)	Live Load: 1.5 kPa		Ver: Floor 1.9.4
Spacing: 600	Ceiling Material: Plaster 10mm Supa Span (8.2 kg/m²)	Point Load: 1.8 kN		Date: 14/02/2019
Quantity: 1	Ceiling Fixing: Metal direct @ 600c	Design: AS 1720.1-2010		Page: 9 of 23

Client: D'ANDREA	Trusstech SA Pty Ltd 16 High St., Dry Creek, SA 5094	Job No: TT02364
Site: 50-52 WINDOR ST MAGILL SA 5072 AUS		Weight: 37.34 kg
Ref: DWLG 5	Joist Name: FJ5 Type: SJ 400 Joists: FJ11	Total Weight: 37.34 kg
		Laminations: 1

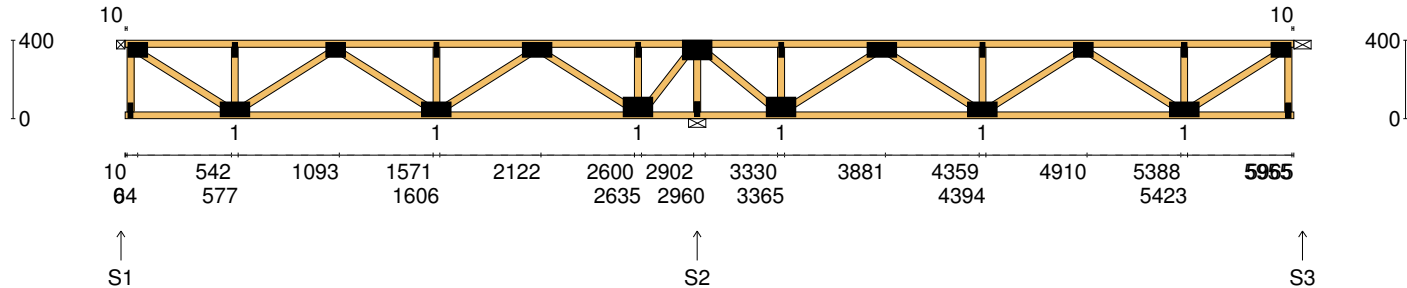


User Def. Load	A1 189.10 kg/m ² WET AREA
-----------------------	--

Applied Load	
DL (kN)	
LL (kN)	
WL Up (kN)	
WL Dn (kN)	

Span: 6010	Floor Material: Particle (15.4 kg/m²)	Application: General Areas	All dimensions in millimetres. This drawing should be read in conjunction with Multinail Technical sheets. Wall plates must be placed at supports only.	016020 (TN-016-020)
Overhang: 0/0	Floor Covering: Std Carpet + Underlay (8 kg/m²)	Live Load: 1.5 kPa		Ver: Floor 1.9.4
Spacing: 600	Ceiling Material: Plaster 10mm Supa Span (8.2 kg/m²)	Point Load: 1.8 kN		Date: 14/02/2019
Quantity: 1	Ceiling Fixing: Metal direct @ 600c	Design: AS 1720.1-2010		Page: 10 of 23

Client: D'ANDREA	Trusstech SA Pty Ltd 16 High St., Dry Creek, SA 5094	Job No: TT02364
Site: 50-52 WINDOR ST MAGILL SA 5072 AUS		Weight: 36.58 kg
Ref: DWLG 5	Joist Name: FJ6 Type: SJ 400 Joists: FJ12	Total Weight: 36.58 kg
		Laminations: 1



TIMBER / PLATES


Member	Size	Plating	Restraint
BC1	90x35-MGP10 H0 ADS	JD5	600
TC1	90x35-MGP10 H0 ADS	JD5	300
LEW1	90x35-MGP10 H0 ADS	JD5	
W1	90x35-MGP10 H0 ADS	JD5	
W2	90x35-MGP10 H0 ADS	JD5	
W3	90x35-MGP10 H0 ADS	JD5	
W4	90x35-MGP10 H0 ADS	JD5	
W5	90x35-MGP10 H0 ADS	JD5	
W6	90x35-MGP10 H0 ADS	JD5	
W7	90x35-MGP10 H0 ADS	JD5	
W8	90x35-MGP10 H0 ADS	JD5	
W9	90x35-MGP10 H0 ADS	JD5	
W10	90x35-MGP10 H0 ADS	JD5	

- 10 more members were not shown -

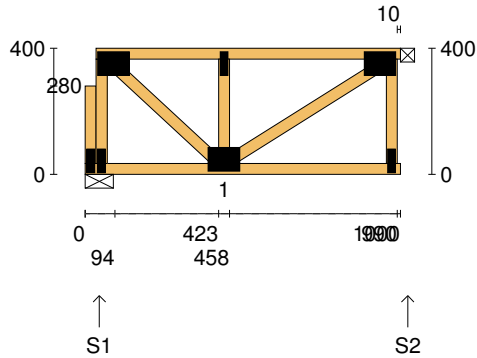
Vertical Reactions at Supports

	S1	S2	S3
1.35DL (kN)	0.37	1.20	0.39
1.2DL + 1.5LL (kN)	1.82	5.96	1.94

Joint	Nail Plate	Joint	Nail Plate
T1	75x100-MN	T8	25x75-MN
BL1	25x75-MN	T9	75x150-MN
B1	75x150-MN	B6	75x150-MN
T2	25x75-MN	T10	25x75-MN
T3	75x100-MN	T11	75x100-MN
B2	75x150-MN	B7	75x150-MN
T4	25x75-MN	T12	25x75-MN
T5	75x150-MN	BR1	25x75-MN
B3	100x150-MN	T13	75x100-MN
T6	25x75-MN		
T7	100x150-MN		
B4	25x75-MN		
B5	100x150-MN		

Span: 5965	Floor Material: Particle (15.4 kg/m²)	Application: General Areas	All dimensions in millimetres. This drawing should be read in conjunction with Multinail Technical sheets. Wall plates must be placed at supports only.	016020 (TN-016-020)
Overhang: 0/0	Floor Covering: Std Carpet + Underlay (8 kg/m²)	Live Load: 1.5 kPa		Ver: Floor 1.9.4
Spacing: 600	Ceiling Material: Plaster 10mm Supa Span (8.2 kg/m²)	Point Load: 1.8 kN		Date: 14/02/2019
Quantity: 1	Ceiling Fixing: Metal direct @ 600c	Design: AS 1720.1-2010		Page: 11 of 23

Client: D'ANDREA	Trusstech SA Pty Ltd 16 High St., Dry Creek, SA 5094	Job No: TT02364
Site: 50-52 WINDOR ST MAGILL SA 5072 AUS		Weight: 7.19 kg
Ref: DWLG 5	Joist Name: FJ7 Type: SJ 400 Joists: FJ13, FJ14	Total Weight: 14.38 kg
		Laminations: 1



TIMBER / PLATES


Member	Size	Plating	Restraint
BC1	90x35-MGP10 H0 ADS	JD5	600
LBlock1	90x35-MGP10 H0 ADS	JD5	
LEW1	90x35-MGP10 H0 ADS	JD5	
TC1	90x35-MGP10 H0 ADS	JD5	300
W1	90x35-MGP10 H0 ADS	JD5	
W2	90x35-MGP10 H0 ADS	JD5	
W3	90x35-MGP10 H0 ADS	JD5	
REW1	90x35-MGP10 H0 ADS	JD5	

Vertical Reactions at Supports

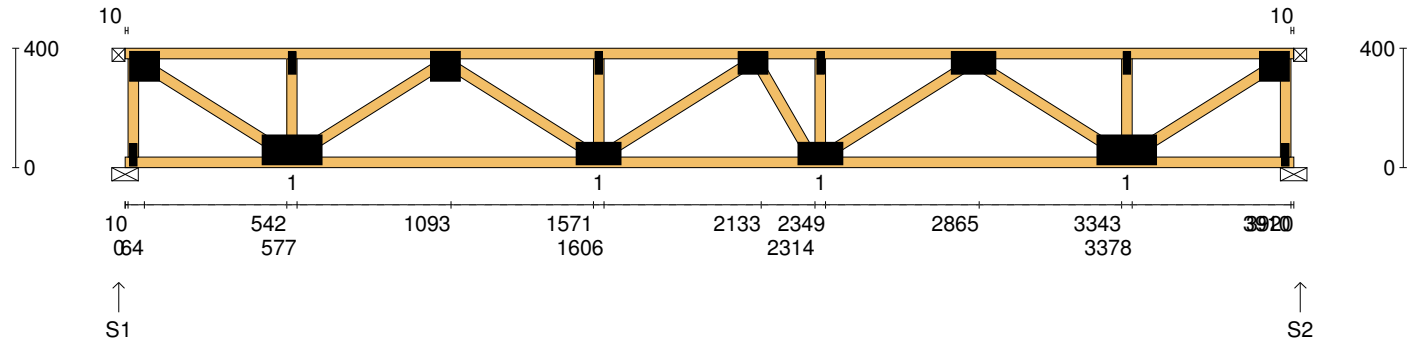
	S1	S2
1.35DL (kN)	0.16	0.16
1.2DL + 1.5LL (kN)	0.77	0.76

Joint Nail Plate

BL1-1	25x75-MN
T1	75x100-MN
BL1	25x75-MN
B1	75x100-MN
T2	25x75-MN
BR1	25x75-MN
T3	75x100-MN

Span: 1000	Floor Material: Particle (15.4 kg/m²)	Application: General Areas	All dimensions in millimetres. This drawing should be read in conjunction with Multinail Technical sheets. Wall plates must be placed at supports only.	016020 (TN-016-020)
Overhang: 0/0	Floor Covering: Std Carpet + Underlay (8 kg/m²)	Live Load: 1.5 kPa		Ver: Floor 1.9.4
Spacing: 600	Ceiling Material: Plaster 10mm Supa Span (8.2 kg/m²)	Point Load: 1.8 kN		Date: 14/02/2019
Quantity: 2	Ceiling Fixing: Metal direct @ 600c	Design: AS 1720.1-2010		Page: 12 of 23

Client: D'ANDREA	Trusstech SA Pty Ltd 16 High St., Dry Creek, SA 5094	Job No: TT02364
Site: 50-52 WINDOR ST MAGILL SA 5072 AUS		Weight: 24.42 kg
Ref: DWLG 5	Joist Name: FJ8 Type: SJ 400 Joists: FJ15, FJ16	Total Weight: 48.83 kg
		Laminations: 1



TIMBER / PLATES


Member	Size	Plating	Restraint
BC1	90x35-MGP10 H0 ADS	JD5	600
TC1	90x35-MGP10 H0 ADS	JD5	300
LEW1	90x35-MGP10 H0 ADS	JD5	
W1	90x35-MGP10 H0 ADS	JD5	
W2	90x35-MGP10 H0 ADS	JD5	
W3	90x35-MGP10 H0 ADS	JD5	
W4	90x35-MGP10 H0 ADS	JD5	
W5	90x35-MGP10 H0 ADS	JD5	
W6	90x35-MGP10 H0 ADS	JD5	
W7	90x35-MGP10 H0 ADS	JD5	
W8	90x35-MGP10 H0 ADS	JD5	
W9	90x35-MGP10 H0 ADS	JD5	
W10	90x35-MGP10 H0 ADS	JD5	

- 3 more members were not shown -

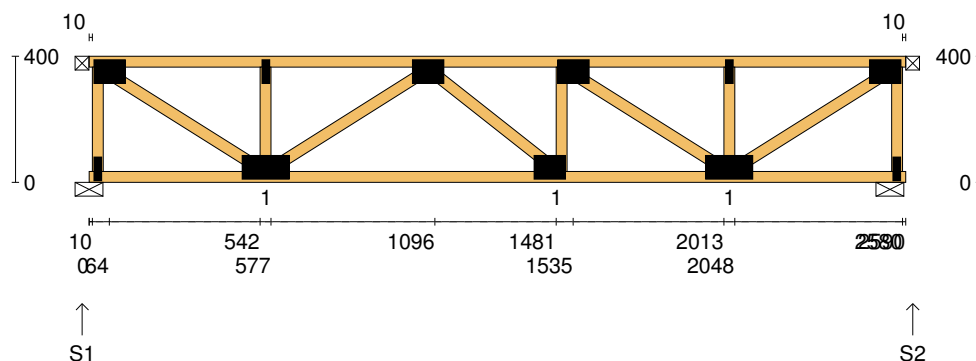
Vertical Reactions at Supports

	S1	S2
1.35DL (kN)	0.64	0.64
1.2DL + 1.5LL (kN)	3.18	3.18

Joint	Nail Plate	Joint	Nail Plate
T1	100x100-MN	BR1	25x75-MN
BL1	25x75-MN	T9	100x100-MN
B1	100x200-MN		
T2	25x75-MN		
T3	100x100-MN		
B2	75x150-MN		
T4	25x75-MN		
T5	75x100-MN		
B3	75x150-MN		
T6	25x75-MN		
T7	75x150-MN		
B4	100x200-MN		
T8	25x75-MN		

Span: 3920	Floor Material: Particle (15.4 kg/m²)	Application: General Areas	All dimensions in millimetres. This drawing should be read in conjunction with Multinail Technical sheets. Wall plates must be placed at supports only.	016020 (TN-016-020)
Overhang: 0/0	Floor Covering: Std Carpet + Underlay (8 kg/m²)	Live Load: 1.5 kPa		Ver: Floor 1.9.4
Spacing: 600	Ceiling Material: Plaster 10mm Supa Span (8.2 kg/m²)	Point Load: 1.8 kN		Date: 14/02/2019
Quantity: 2	Ceiling Fixing: Metal direct @ 600c	Design: AS 1720.1-2010		Page: 13 of 23

Client: D'ANDREA	Trusstech SA Pty Ltd 16 High St., Dry Creek, SA 5094 Joist Name: FJ9 Type: SJ 400 Joists: FJ17	Job No: TT02364
Site: 50-52 WINDOR ST MAGILL SA 5072 AUS		Weight: 16.32 kg
Ref: DWLG 5		Total Weight: 16.32 kg Laminations: 1

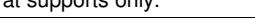


TIMBER / PLATES				
Member	Size		Plating	Restraint
BC1	90x35-MGP10 H0 ADS		JD5	600
TC1	90x35-MGP10 H0 ADS		JD5	300
LEW1	90x35-MGP10 H0 ADS		JD5	
W1	90x35-MGP10 H0 ADS		JD5	
W2	90x35-MGP10 H0 ADS		JD5	
W3	90x35-MGP10 H0 ADS		JD5	
W4	90x35-MGP10 H0 ADS		JD5	
W5	90x35-MGP10 H0 ADS		JD5	
W6	90x35-MGP10 H0 ADS		JD5	
W7	90x35-MGP10 H0 ADS		JD5	
W8	90x35-MGP10 H0 ADS		JD5	
REW1	90x35-MGP10 H0 ADS		JD5	

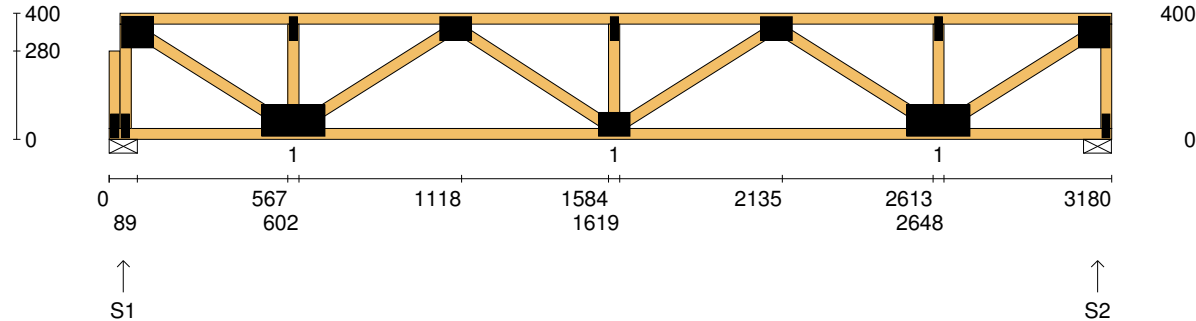
Vertical Reactions at Supports

		S1	S2
1.35DL	(kN)	0.42	0.43
1.2DL + 1.5LL	(kN)	2.09	2.09

Joint	Nail Plate
T1	75x100-MN
BL1	25x75-MN
B1	75x150-MN
T2	25x75-MN
T3	75x100-MN
B2	75x100-MN
T4	75x100-MN
B3	75x150-MN
T5	25x75-MN
BR1	25x75-MN
T6	75x100-MN

Span:	2590	Floor Material:	Particle (15.4 kg/m²)	Application:	General Areas	All dimensions in millimetres. This drawing should be read in conjunction with Multinail Technical sheets. Wall plates must be placed at supports only.	016020 (TN-016-020)	
Overhang:	0/0	Floor Covering:	Std Carpet + Underlay (8 kg/m²)	Live Load:	1.5 kPa		Ver:	Floor 1.9.4
Spacing:	600	Ceiling Material:	Plaster 10mm Supa Span (8.2 kg/m²)	Point Load:	1.8 kN		Date:	14/02/2019
Quantity:	1	Ceiling Fixing:	Metal direct @ 600c	Design:	AS 1720.1-2010		Page:	14 of 23

Client: D'ANDREA	Trusstech SA Pty Ltd 16 High St., Dry Creek, SA 5094 Joist Name: FJ10 Type: SJ 400 Joists: FJ19	Job No: TT02364
Site: 50-52 WINDOR ST MAGILL SA 5072 AUS		Weight: 19.92 kg
Ref: DWLG 5		Total Weight: 19.92 kg
		Laminations: 1



TIMBER / PLATES

Member	Size	Plating	Restraint
BC1	90x35-MGP10 H0 ADS	JD5	600
LBlock1	90x35-MGP10 H0 ADS	JD5	
LEW1	90x35-MGP10 H0 ADS	JD5	
TC1	90x35-MGP10 H0 ADS	JD5	300
W1	90x35-MGP10 H0 ADS	JD5	
W2	90x35-MGP10 H0 ADS	JD5	
W3	90x35-MGP10 H0 ADS	JD5	
W4	90x35-MGP10 H0 ADS	JD5	
W5	90x35-MGP10 H0 ADS	JD5	
W6	90x35-MGP10 H0 ADS	JD5	
W7	90x35-MGP10 H0 ADS	JD5	
W8	90x35-MGP10 H0 ADS	JD5	
W9	90x35-MGP10 H0 ADS	JD5	


- 1 more member was not shown -

Vertical Reactions at Supports

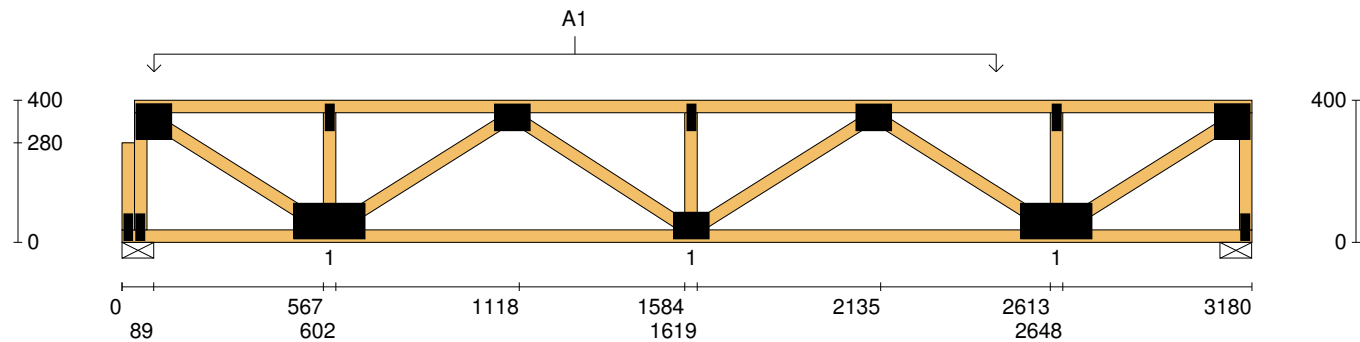
	S1	S2
1.35DL (kN)	0.86	0.74
1.2DL + 1.5LL (kN)	2.86	2.75

Joint Nail Plate

BL1-1	25x75-MN
T1	100x100-MN
BL1	25x75-MN
B1	100x200-MN
T2	25x75-MN
T3	75x100-MN
B2	75x100-MN
T4	25x75-MN
T5	75x100-MN
B3	100x200-MN
T6	25x75-MN
BR1	25x75-MN
T7	100x100-MN


Span: 3180	Floor Material: Particle (15.4 kg/m²)	Application: General Areas	All dimensions in millimetres. This drawing should be read in conjunction with Multinail Technical sheets. Wall plates must be placed at supports only.	016020 (TN-016-020)
Overhang: 0/0	Floor Covering: Std Carpet + Underlay (8 kg/m²)	Live Load: 1.5 kPa		Ver: Floor 1.9.4
Spacing: 600	Ceiling Material: Plaster 10mm Supa Span (8.2 kg/m²)	Point Load: 1.8 kN		Date: 14/02/2019
Quantity: 1	Ceiling Fixing: Metal direct @ 600c	Design: AS 1720.1-2010		Page: 15 of 23

Client: D'ANDREA	Trusstech SA Pty Ltd 16 High St., Dry Creek, SA 5094 Joist Name: FJ10 Type: SJ 400 Joists: FJ19	Job No: TT02364
Site: 50-52 WINDOR ST MAGILL SA 5072 AUS		Weight: 19.92 kg
Ref: DWLG 5		Total Weight: 19.92 kg Laminations: 1

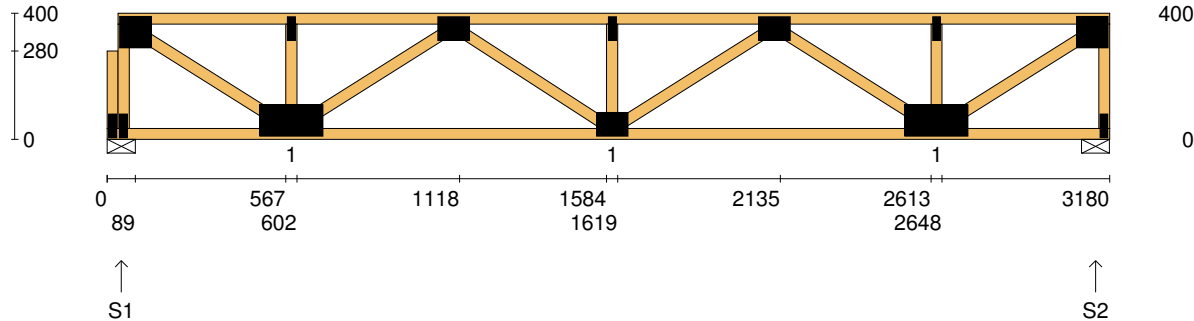


User Def. Load	A1 53.00 kg/m ² WET AREA
-----------------------	---

Applied Load	
DL (kN)	
LL (kN)	
WL Up (kN)	
WL Dn (kN)	

Span: 3180	Floor Material: Particle (15.4 kg/m²)	Application: General Areas	All dimensions in millimetres. This drawing should be read in conjunction with Multinail Technical sheets. Wall plates must be placed at supports only.	016020 (TN-016-020)
Overhang: 0/0	Floor Covering: Std Carpet + Underlay (8 kg/m²)	Live Load: 1.5 kPa		Ver: Floor 1.9.4
Spacing: 600	Ceiling Material: Plaster 10mm Supa Span (8.2 kg/m²)	Point Load: 1.8 kN		Date: 14/02/2019
Quantity: 1	Ceiling Fixing: Metal direct @ 600c	Design: AS 1720.1-2010		Page: 16 of 23

Client: D'ANDREA	Trusstech SA Pty Ltd 16 High St., Dry Creek, SA 5094 Joist Name: FJ10 Type: SJ 400 Joists: FJ20	Job No: TT02364
Site: 50-52 WINDOR ST MAGILL SA 5072 AUS		Weight: 19.92 kg
Ref: DWLG 5		Total Weight: 19.92 kg Laminations: 1



TIMBER / PLATES

Member	Size	Plating	Restraint
BC1	90x35-MGP10 H0 ADS	JD5	600
LBlock1	90x35-MGP10 H0 ADS	JD5	
LEW1	90x35-MGP10 H0 ADS	JD5	
TC1	90x35-MGP10 H0 ADS	JD5	300
W1	90x35-MGP10 H0 ADS	JD5	
W2	90x35-MGP10 H0 ADS	JD5	
W3	90x35-MGP10 H0 ADS	JD5	
W4	90x35-MGP10 H0 ADS	JD5	
W5	90x35-MGP10 H0 ADS	JD5	
W6	90x35-MGP10 H0 ADS	JD5	
W7	90x35-MGP10 H0 ADS	JD5	
W8	90x35-MGP10 H0 ADS	JD5	
W9	90x35-MGP10 H0 ADS	JD5	


- 1 more member was not shown -

Vertical Reactions at Supports

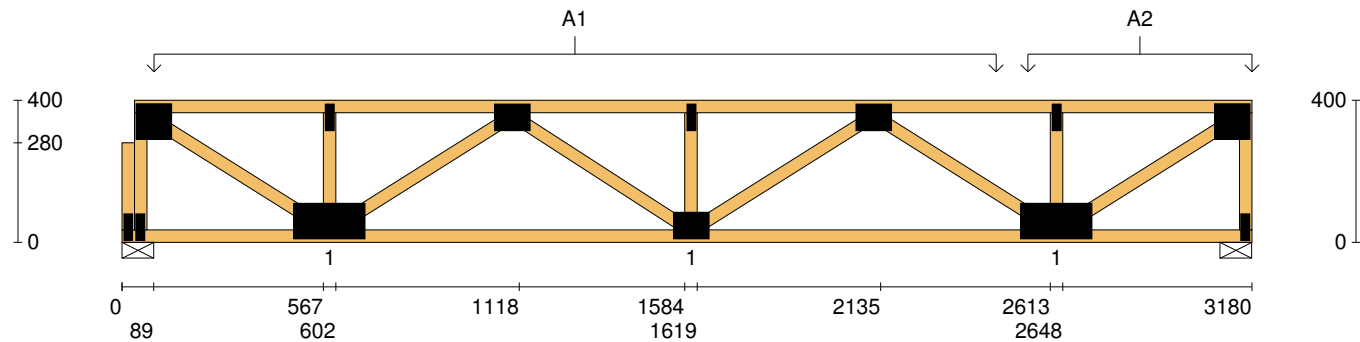
	S1	S2
1.35DL (kN)	0.88	0.94
1.2DL + 1.5LL (kN)	2.90	3.11

Joint Nail Plate

BL1-1	25x75-MN
T1	100x100-MN
BL1	25x75-MN
B1	100x200-MN
T2	25x75-MN
T3	75x100-MN
B2	75x100-MN
T4	25x75-MN
T5	75x100-MN
B3	100x200-MN
T6	25x75-MN
BR1	25x75-MN
T7	100x100-MN


Span: 3180	Floor Material: Particle (15.4 kg/m²)	Application: General Areas	All dimensions in millimetres. This drawing should be read in conjunction with Multinail Technical sheets. Wall plates must be placed at supports only.	016020 (TN-016-020)
Overhang: 0/0	Floor Covering: Std Carpet + Underlay (8 kg/m²)	Live Load: 1.5 kPa		Ver: Floor 1.9.4
Spacing: 600	Ceiling Material: Plaster 10mm Supa Span (8.2 kg/m²)	Point Load: 1.8 kN		Date: 14/02/2019
Quantity: 1	Ceiling Fixing: Metal direct @ 600c	Design: AS 1720.1-2010		Page: 17 of 23

Client: D'ANDREA	Trusstech SA Pty Ltd 16 High St., Dry Creek, SA 5094 Joist Name: FJ10 Type: SJ 400 Joists: FJ20	Job No: TT02364
Site: 50-52 WINDOR ST MAGILL SA 5072 AUS		Weight: 19.92 kg
Ref: DWLG 5		Total Weight: 19.92 kg Laminations: 1

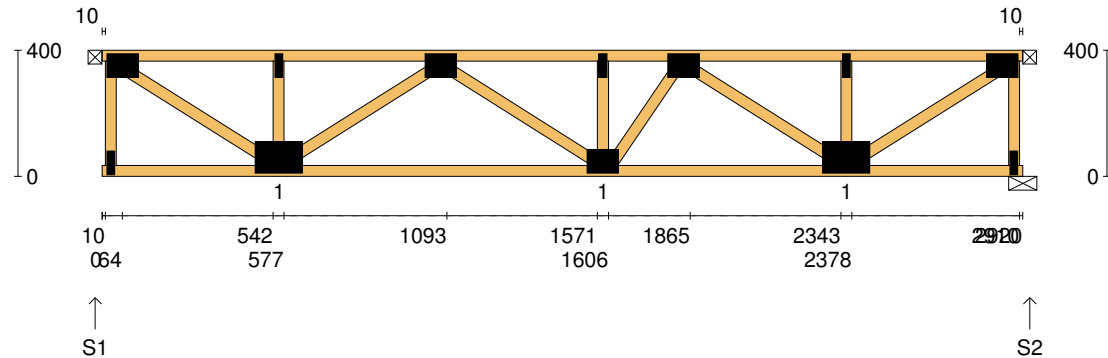


User Def. Load	A1	A2
	53.00 kg/m ²	189.10 kg/m ²
	WET AREA	WET AREA

Applied Load	
DL	(kN)
LL	(kN)
WL Up	(kN)
WL Dn	(kN)

Span:	3180	Floor Material:	Particle (15.4 kg/m²)	Application:	General Areas	All dimensions in millimetres. This drawing should be read in conjunction with Multinail Technical sheets. Wall plates must be placed at supports only.	016020 (TN-016-020)
Overhang:	0/0	Floor Covering:	Std Carpet + Underlay (8 kg/m²)	Live Load:	1.5 kPa		Ver: Floor 1.9.4
Spacing:	600	Ceiling Material:	Plaster 10mm Supa Span (8.2 kg/m²)	Point Load:	1.8 kN		Date: 14/02/2019
Quantity:	1	Ceiling Fixing:	Metal direct @ 600c	Design:	AS 1720.1-2010		Page: 18 of 23

Client: D'ANDREA	Trusstech SA Pty Ltd 16 High St., Dry Creek, SA 5094	Job No: TT02364
Site: 50-52 WINDOR ST MAGILL SA 5072 AUS		Weight: 18.23 kg
Ref: DWLG 5	Joist Name: FJ11 Type: SJ 400 Joists: FJ21, FJ22	Total Weight: 36.45 kg
		Laminations: 1



TIMBER / PLATES


Member	Size	Plating	Restraint
BC1	90x35-MGP10 H0 ADS	JD5	600
TC1	90x35-MGP10 H0 ADS	JD5	300
LEW1	90x35-MGP10 H0 ADS	JD5	
W1	90x35-MGP10 H0 ADS	JD5	
W2	90x35-MGP10 H0 ADS	JD5	
W3	90x35-MGP10 H0 ADS	JD5	
W4	90x35-MGP10 H0 ADS	JD5	
W5	90x35-MGP10 H0 ADS	JD5	
W6	90x35-MGP10 H0 ADS	JD5	
W7	90x35-MGP10 H0 ADS	JD5	
W8	90x35-MGP10 H0 ADS	JD5	
W9	90x35-MGP10 H0 ADS	JD5	
REW1	90x35-MGP10 H0 ADS	JD5	

Vertical Reactions at Supports

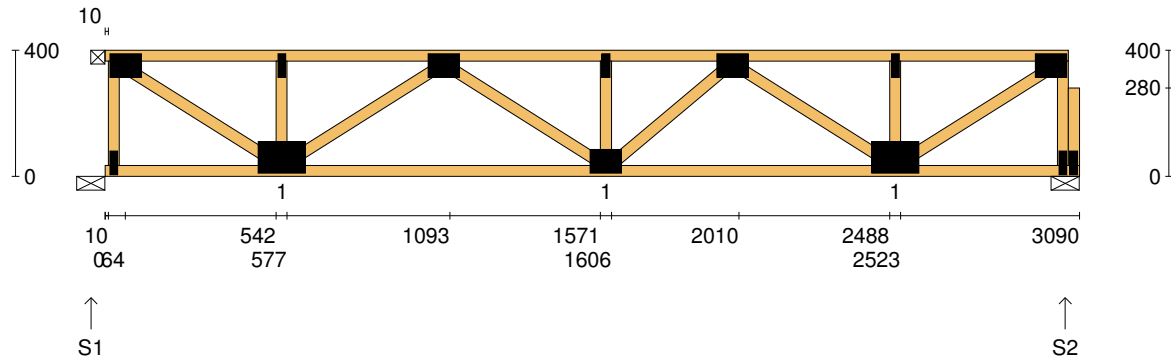
	S1	S2
1.35DL (kN)	0.48	0.48
1.2DL + 1.5LL (kN)	2.36	2.36

Joint Nail Plate

T1	75x100-MN
BL1	25x75-MN
B1	100x150-MN
T2	25x75-MN
T3	75x100-MN
B2	75x100-MN
T4	25x75-MN
T5	75x100-MN
B3	100x150-MN
T6	25x75-MN
BR1	25x75-MN
T7	75x100-MN

Span: 2920	Floor Material: Particle (15.4 kg/m²)	Application: General Areas	All dimensions in millimetres. This drawing should be read in conjunction with Multinail Technical sheets. Wall plates must be placed at supports only.	016020 (TN-016-020)
Overhang: 0/0	Floor Covering: Std Carpet + Underlay (8 kg/m²)	Live Load: 1.5 kPa		Ver: Floor 1.9.4
Spacing: 600	Ceiling Material: Plaster 10mm Supa Span (8.2 kg/m²)	Point Load: 1.8 kN		Date: 14/02/2019
Quantity: 2	Ceiling Fixing: Metal direct @ 600c	Design: AS 1720.1-2010		Page: 19 of 23

Client: D'ANDREA	Trusstech SA Pty Ltd 16 High St., Dry Creek, SA 5094 Joist Name: FJ12 Type: SJ 400 Joists: FJ24, FJ25	Job No: TT02364
Site: 50-52 WINDOR ST MAGILL SA 5072 AUS		Weight: 19.28 kg
Ref: DWL G 5		Total Weight: 38.56 kg Laminations: 1



TIMBER / PLATES

Member	Size	Plating	Restraint
BC1	90x35-MGP10 H0 ADS	JD5	600
TC1	90x35-MGP10 H0 ADS	JD5	300
LEW1	90x35-MGP10 H0 ADS	JD5	
W1	90x35-MGP10 H0 ADS	JD5	
W2	90x35-MGP10 H0 ADS	JD5	
W3	90x35-MGP10 H0 ADS	JD5	
W4	90x35-MGP10 H0 ADS	JD5	
W5	90x35-MGP10 H0 ADS	JD5	
W6	90x35-MGP10 H0 ADS	JD5	
W7	90x35-MGP10 H0 ADS	JD5	
W8	90x35-MGP10 H0 ADS	JD5	
W9	90x35-MGP10 H0 ADS	JD5	
REW1	90x35-MGP10 H0 ADS	JD5	


- 1 more member was not shown -

Vertical Reactions at Supports

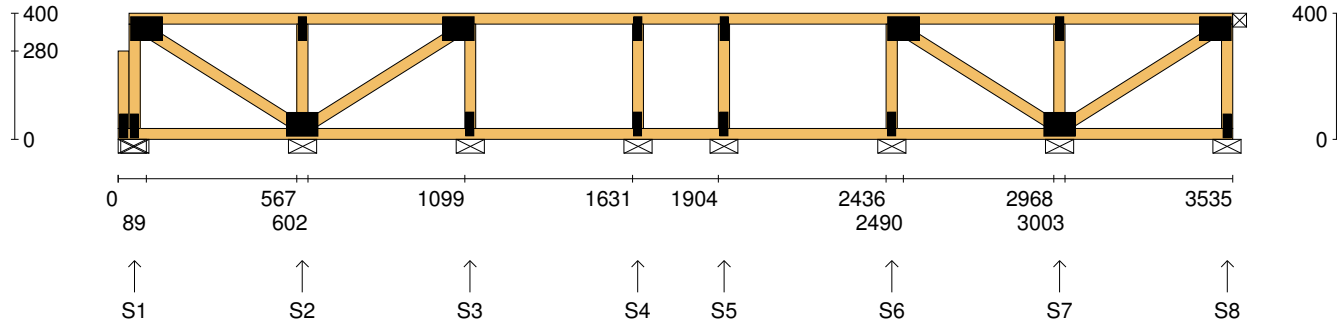
	S1	S2
1.35DL (kN)	0.50	0.51
1.2DL + 1.5LL (kN)	2.48	2.48

Joint Nail Plate

T1	75x100-MN
BL1	25x75-MN
B1	100x150-MN
T2	25x75-MN
T3	75x100-MN
B2	75x100-MN
T4	25x75-MN
T5	75x100-MN
B3	100x150-MN
T6	25x75-MN
BR1	25x75-MN
T7	75x100-MN
BR1-1	25x75-MN

Span: 3090	Floor Material: Particle (15.4 kg/m²)	Application: General Areas	All dimensions in millimetres. This drawing should be read in conjunction with Multinail Technical sheets. Wall plates must be placed at supports only.	016020 (TN-016-020)
Overhang: 0/0	Floor Covering: Std Carpet + Underlay (8 kg/m²)	Live Load: 1.5 kPa		Ver: Floor 1.9.4
Spacing: 600	Ceiling Material: Plaster 10mm Supa Span (8.2 kg/m²)	Point Load: 1.8 kN		Date: 14/02/2019
Quantity: 2	Ceiling Fixing: Metal direct @ 600c	Design: AS 1720.1-2010		Page: 20 of 23

Client: D'ANDREA	Trusstech SA Pty Ltd 16 High St., Dry Creek, SA 5094 Joist Name: FJ13 Type: SJ 400 Ladder Joists: FJ26	Job No: TT02364
Site: 50-52 WINDOR ST MAGILL SA 5072 AUS		Weight: 20.40 kg
Ref: DWLG 5		Total Weight: 20.40 kg Laminations: 1



TIMBER / PLATES


Member	Size	Plating	Restraint
BC1	90x35-MGP10 H0 ADS	JD5	600
LBlock1	90x35-MGP10 H0 ADS	JD5	
LEW1	90x35-MGP10 H0 ADS	JD5	
TC1	90x35-MGP10 H0 ADS	JD5	300
W1	90x35-MGP10 H0 ADS	JD5	
W2	90x35-MGP10 H0 ADS	JD5	
W3	90x35-MGP10 H0 ADS	JD5	
W4	90x35-MGP10 H0 ADS	JD5	
W5	90x35-MGP10 H0 ADS	JD5	
W6	90x35-MGP10 H0 ADS	JD5	
W7	90x35-MGP10 H0 ADS	JD5	
W8	90x35-MGP10 H0 ADS	JD5	
W9	90x35-MGP10 H0 ADS	JD5	

- 2 more members were not shown -

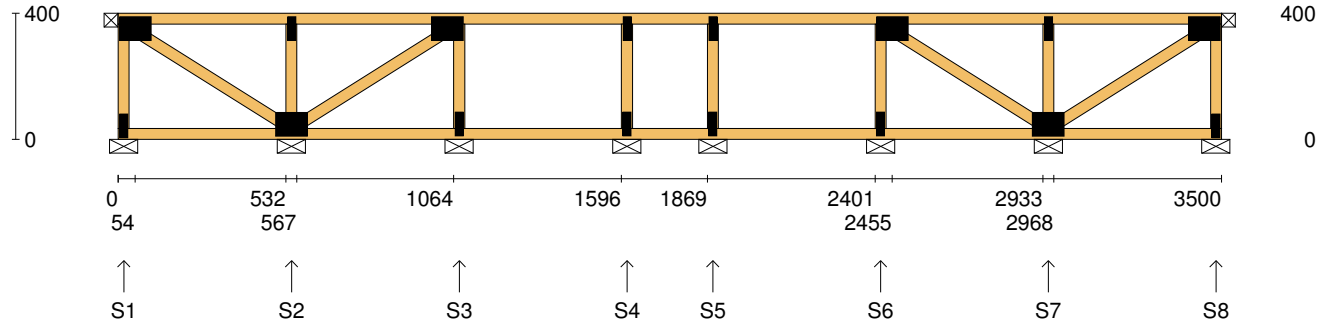
Vertical Reactions at Supports

	S1	S2	S3	S4	S5	S6	S7	S8
1.35DL (kN)	0.07	0.22	0.16	0.12	0.12	0.16	0.22	0.07
1.2DL + 1.5LL (kN)	0.31	1.11	0.80	0.63	0.63	0.80	1.11	0.30

Joint	Nail Plate	Joint	Nail Plate
BL1-1	25x75-MN	B6	75x100-MN
T1	75x100-MN	T7	25x75-MN
BL1	25x75-MN	BR1	25x75-MN
B1	75x100-MN	T8	75x100-MN
T2	25x75-MN		
T3	75x100-MN		
B2	25x75-MN		
T4	25x75-MN		
B3	25x75-MN		
T5	25x75-MN		
B4	25x75-MN		
T6	75x100-MN		
B5	25x75-MN		

Span: 3535	Floor Material: Particle (15.4 kg/m²)	Application: General Areas	All dimensions in millimetres. This drawing should be read in conjunction with Multinail Technical sheets. Wall plates must be placed at supports only.	016020 (TN-016-020)
Overhang: 0/0	Floor Covering: Std Carpet + Underlay (8 kg/m²)	Live Load: 1.5 kPa		Ver: Floor 1.9.4
Spacing: 600	Ceiling Material: Plaster 10mm Supa Span (8.2 kg/m²)	Point Load: 1.8 kN		Date: 14/02/2019
Quantity: 1	Ceiling Fixing: Metal direct @ 600c	Design: AS 1720.1-2010		Page: 21 of 23

Client: D'ANDREA	Trusstech SA Pty Ltd 16 High St., Dry Creek, SA 5094 Joist Name: FJ14 Type: SJ 400 Ladder Joists: FJ27	Job No: TT02364
Site: 50-52 WINDOR ST MAGILL SA 5072 AUS		Weight: 19.92 kg
Ref: DWLG 5		Total Weight: 19.92 kg
		Laminations: 1



TIMBER / PLATES


Member	Size	Plating	Restraint
BC1	90x35-MGP10 H0 ADS	JD5	600
LEW1	90x35-MGP10 H0 ADS	JD5	
TC1	90x35-MGP10 H0 ADS	JD5	300
W1	90x35-MGP10 H0 ADS	JD5	
W2	90x35-MGP10 H0 ADS	JD5	
W3	90x35-MGP10 H0 ADS	JD5	
W4	90x35-MGP10 H0 ADS	JD5	
W5	90x35-MGP10 H0 ADS	JD5	
W6	90x35-MGP10 H0 ADS	JD5	
W7	90x35-MGP10 H0 ADS	JD5	
W8	90x35-MGP10 H0 ADS	JD5	
W9	90x35-MGP10 H0 ADS	JD5	
W10	90x35-MGP10 H0 ADS	JD5	

- 1 more member was not shown -

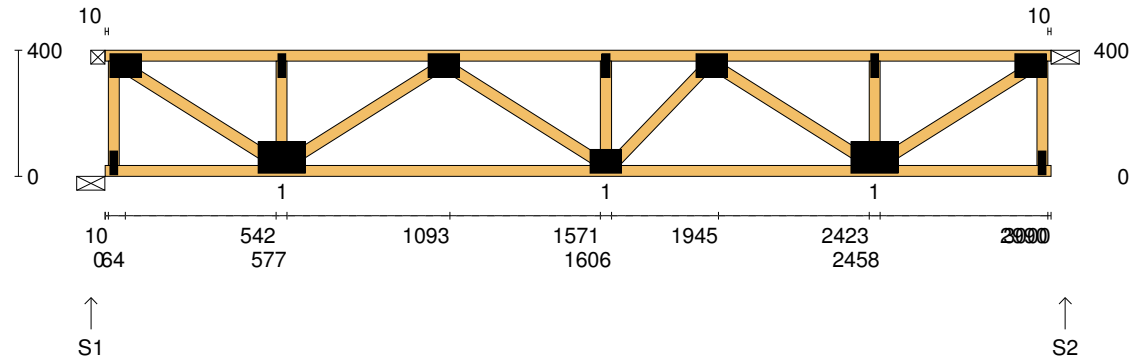
Vertical Reactions at Supports

	S1	S2	S3	S4	S5	S6	S7	S8
1.35DL (kN)	0.07	0.22	0.16	0.12	0.12	0.16	0.22	0.07
1.2DL + 1.5LL (kN)	0.30	1.11	0.80	0.63	0.63	0.80	1.11	0.30

Joint	Nail Plate	Joint	Nail Plate
T1	75x100-MN	T7	25x75-MN
BL1	25x75-MN	BR1	25x75-MN
B1	75x100-MN	T8	75x100-MN
T2	25x75-MN		
T3	75x100-MN		
B2	25x75-MN		
T4	25x75-MN		
B3	25x75-MN		
T5	25x75-MN		
B4	25x75-MN		
T6	75x100-MN		
B5	25x75-MN		
B6	75x100-MN		

Span: 3500	Floor Material: Particle (15.4 kg/m²)	Application: General Areas	All dimensions in millimetres. This drawing should be read in conjunction with Multinail Technical sheets. Wall plates must be placed at supports only.	016020 (TN-016-020)
Overhang: 0/0	Floor Covering: Std Carpet + Underlay (8 kg/m²)	Live Load: 1.5 kPa		Ver: Floor 1.9.4
Spacing: 600	Ceiling Material: Plaster 10mm Supa Span (8.2 kg/m²)	Point Load: 1.8 kN		Date: 14/02/2019
Quantity: 1	Ceiling Fixing: Metal direct @ 600c	Design: AS 1720.1-2010		Page: 22 of 23

Client: D'ANDREA	Trusstech SA Pty Ltd 16 High St., Dry Creek, SA 5094	Job No: TT02364
Site: 50-52 WINDOR ST MAGILL SA 5072 AUS		Weight: 18.56 kg
Ref: DWLG 5	Joist Name: FJ15 Type: SJ 400 Joists: FJ28, FJ29, FJ30, FJ31	Total Weight: 74.23 kg
		Laminations: 1



TIMBER / PLATES


Member	Size	Plating	Restraint
BC1	90x35-MGP10 H0 ADS	JD5	600
TC1	90x35-MGP10 H0 ADS	JD5	300
LEW1	90x35-MGP10 H0 ADS	JD5	
W1	90x35-MGP10 H0 ADS	JD5	
W2	90x35-MGP10 H0 ADS	JD5	
W3	90x35-MGP10 H0 ADS	JD5	
W4	90x35-MGP10 H0 ADS	JD5	
W5	90x35-MGP10 H0 ADS	JD5	
W6	90x35-MGP10 H0 ADS	JD5	
W7	90x35-MGP10 H0 ADS	JD5	
W8	90x35-MGP10 H0 ADS	JD5	
W9	90x35-MGP10 H0 ADS	JD5	
REW1	90x35-MGP10 H0 ADS	JD5	

Vertical Reactions at Supports

	S1	S2
1.35DL (kN)	0.49	0.49
1.2DL + 1.5LL (kN)	2.42	2.42

Joint Nail Plate

T1	75x100-MN
BL1	25x75-MN
B1	100x150-MN
T2	25x75-MN
T3	75x100-MN
B2	75x100-MN
T4	25x75-MN
T5	75x100-MN
B3	100x150-MN
T6	25x75-MN
BR1	25x75-MN
T7	75x100-MN

Span: 3000	Floor Material: Particle (15.4 kg/m²)	Application: General Areas	All dimensions in millimetres. This drawing should be read in conjunction with Multinail Technical sheets. Wall plates must be placed at supports only.	016020 (TN-016-020)
Overhang: 0/0	Floor Covering: Std Carpet + Underlay (8 kg/m²)	Live Load: 1.5 kPa		Ver: Floor 1.9.4
Spacing: 600	Ceiling Material: Plaster 10mm Supa Span (8.2 kg/m²)	Point Load: 1.8 kN		Date: 14/02/2019
Quantity: 4	Ceiling Fixing: Metal direct @ 600c	Design: AS 1720.1-2010		Page: 23 of 23